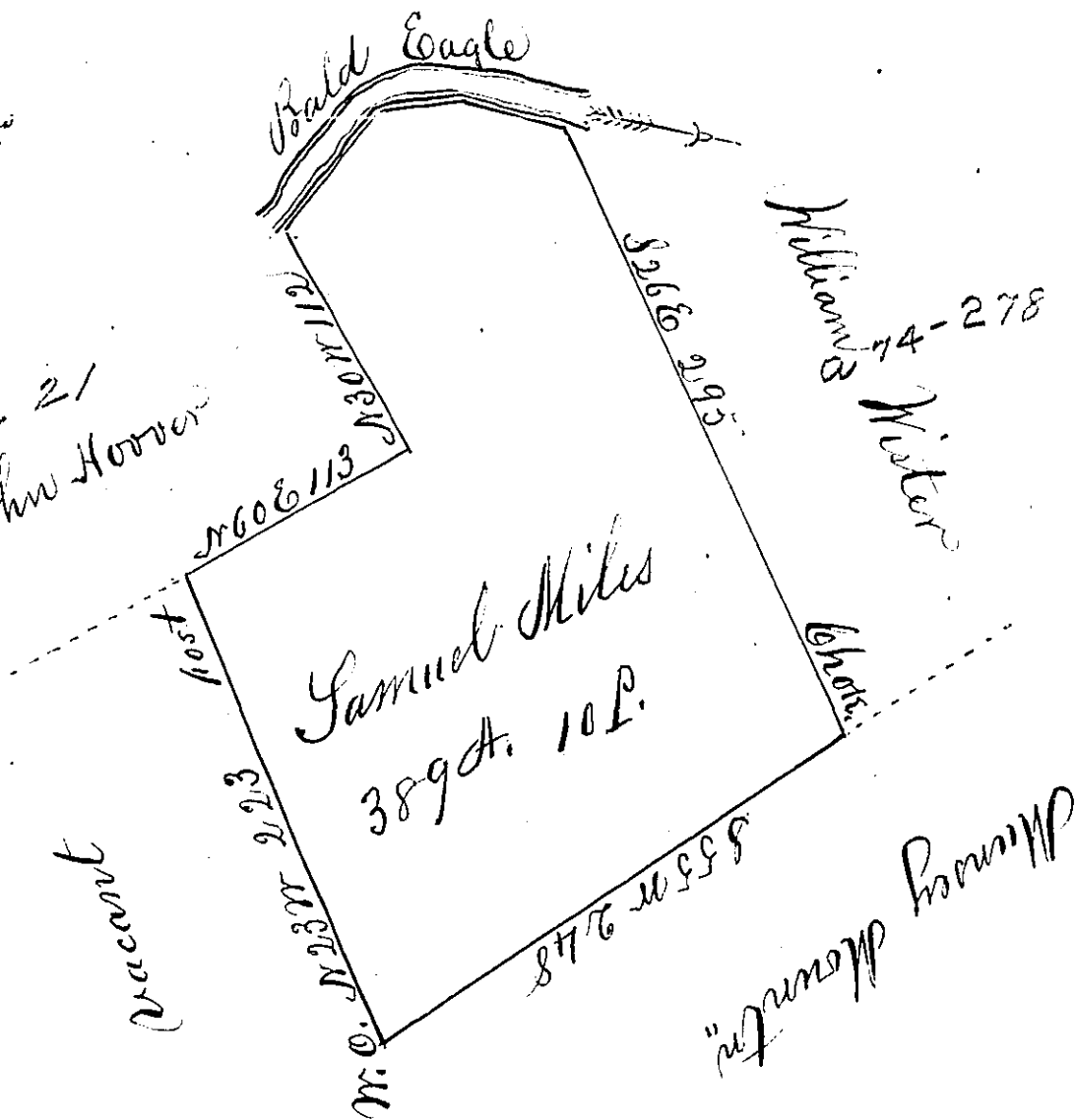


Courses & Dist^{ns}
 down Bald Eagle
 N 36 E 34
 N 82 E 40
 S 79 E $\frac{43}{117}$

a 5² 21
 Martin & John Hoover



A Draught of a tract of land situate in Spring Township Centre County containing three hundred and eighty nine acres ten perches and the usual allowance of six p. Cent for roads &c. Surveyed for Samuel Miles May 2^d 1799. in pursuance of a warrant dated January 17th 1793.
 To Samuel Cochran Esq^r.
 Suror^g Gen^l.
 James Harris D. S.

IN TESTIMONY that the above is a copy of the original remaining on file in the Department of Internal Affairs of Pennsylvania, made conformably to an Act of Assembly approved the 16th day of February, 1833, I have hereunto set my Hand and caused the Seal of said Department to be affixed at Harrisburg, this Twenty Seventh day of March 1855.

J. Simpson Africa,
 Secretary of Internal Affairs